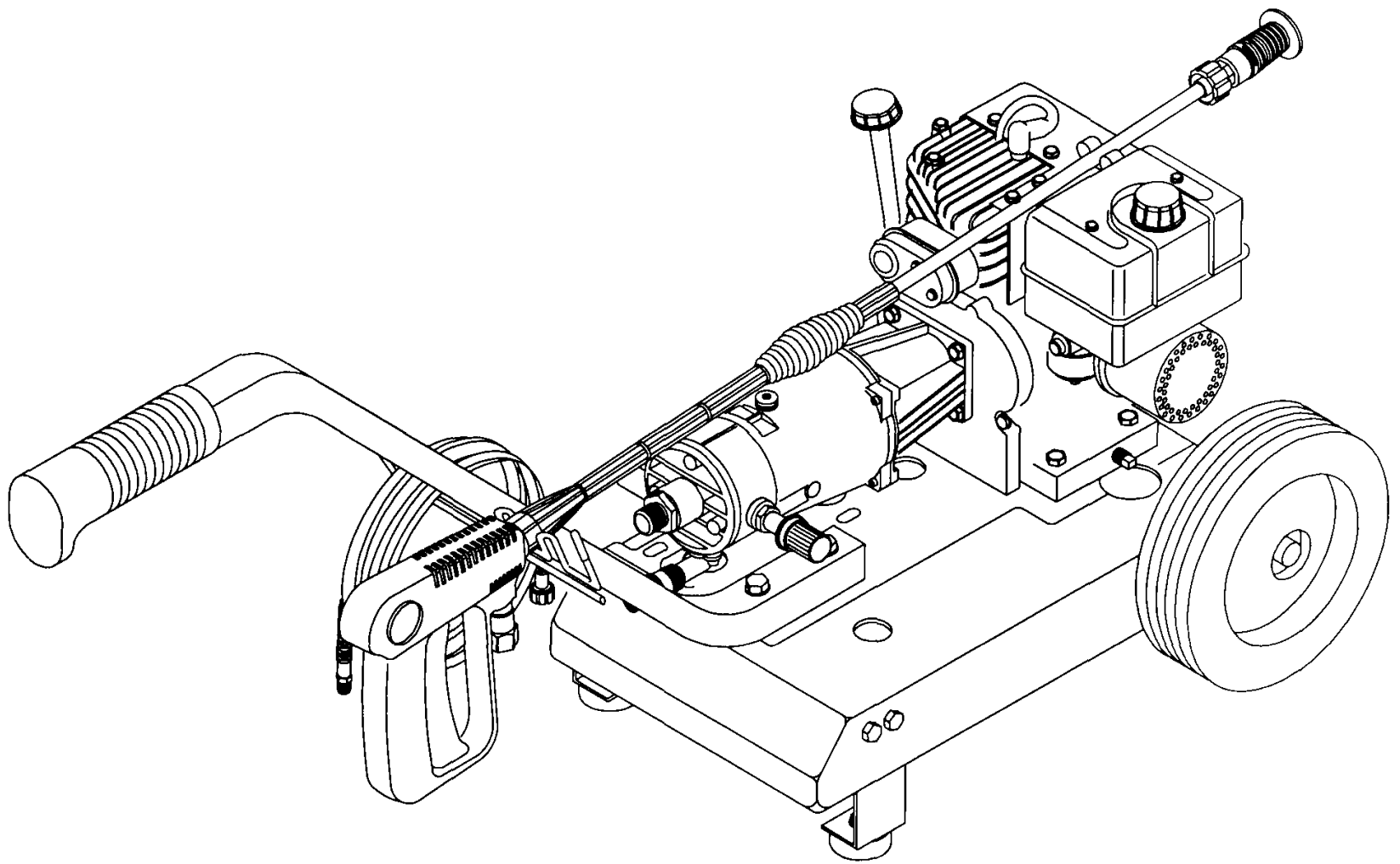


Parts Manual

Mfg. No: 1057-0
1,500 PSI Limited Edition



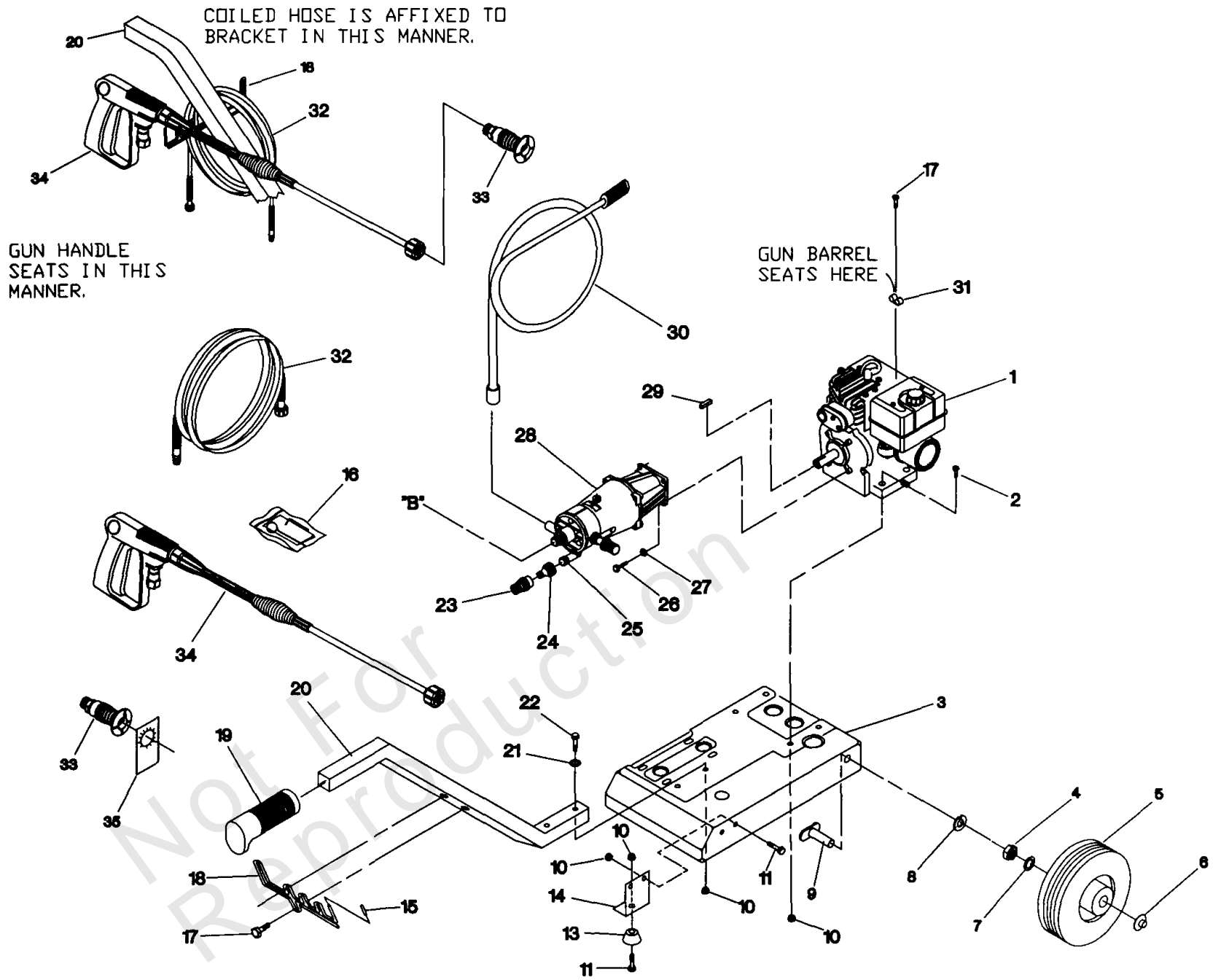
Model Components	Page
Pressure Washer.....	4
Pump.....	6
Torque Specification Chart.....	10

Not For
Reproduction

Pressure Washer

Note: Unless noted otherwise, use the standard torque specifications

Mfg. No: 1057-0



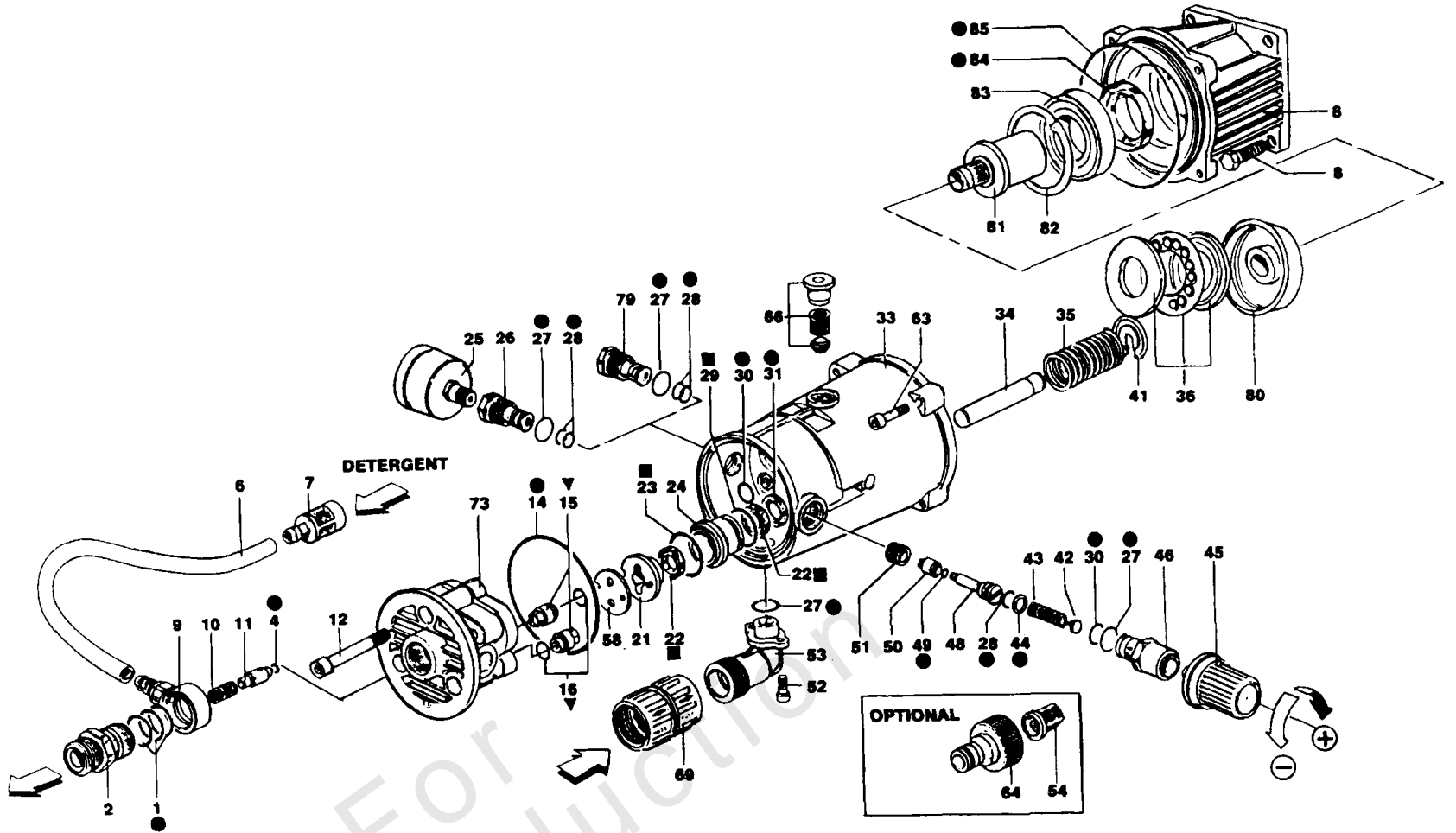
Pressure Washer

REF NO	PART NO	QTY	DESCRIPTION
1	95989	1	ENGINE, 3.5 Tecumseh Model #H35-45671X
2	39414	4	HHCS, M8 1.25 x 35
3	95902	1	BASE, Mounting
4	94222Q	2	JAM NUT, 5/8 - 18 Lock
5	91094	2	WHEEL
6	75402	2	PUSHNUT, 1/2"
7	49808	2	WASHER, M12 Flat
8	22246	2	WASHER, 5/8 Lock
9	93728	2	AXLE
10	52858	12	NUT, M8 1.25 Locking
11	39253	6	HHCS, M8 1.25 x 20
13	87841	2	MOUNT, Vibration
14	91092	2	LEG, Support
15	92067	1	CAP, Vinyl
16	97009	1	KIT, Nozzle Cleaning
17	86292	3	SCREW, #10 Self Drilling
18	95908	1	SUPPORT, Gun & Hose
19	77584	1	HANDLE, Grip
20	91093	1	HANDLE, Guide
21	50190	2	WASHER, Flat
22	57821	2	HHCS, M8 1.25 x 40
23	96016	1	QUICK DISCONNECT, Female
24	96017	1	QUICK DISCONNECT
25	90065	1	NECK, Plastic Garden Hose -(Replacement part only)
26	95531	4	SHCS, 5/16 - 24 x 3/4
27	92479	4	WASHER, M8 Lock
28	87627	1	PUMP
29	89314	1	KEY, 3/16" sq. x 1-7/8"
30	89800	1	TUBE & FILTER, Injector -(Replacement part only)
31	65852	1	CLIP, Spring
32	97914	1	HOSE,
33	95587C	1	NOZZLE, Hi/Low
34	95567	1	GUN
35	97566	1	TAG, Nozzle

Pump

Note: Unless noted otherwise, use the standard torque specifications

Mfg. No: 1057-0



Not For
Reproduction

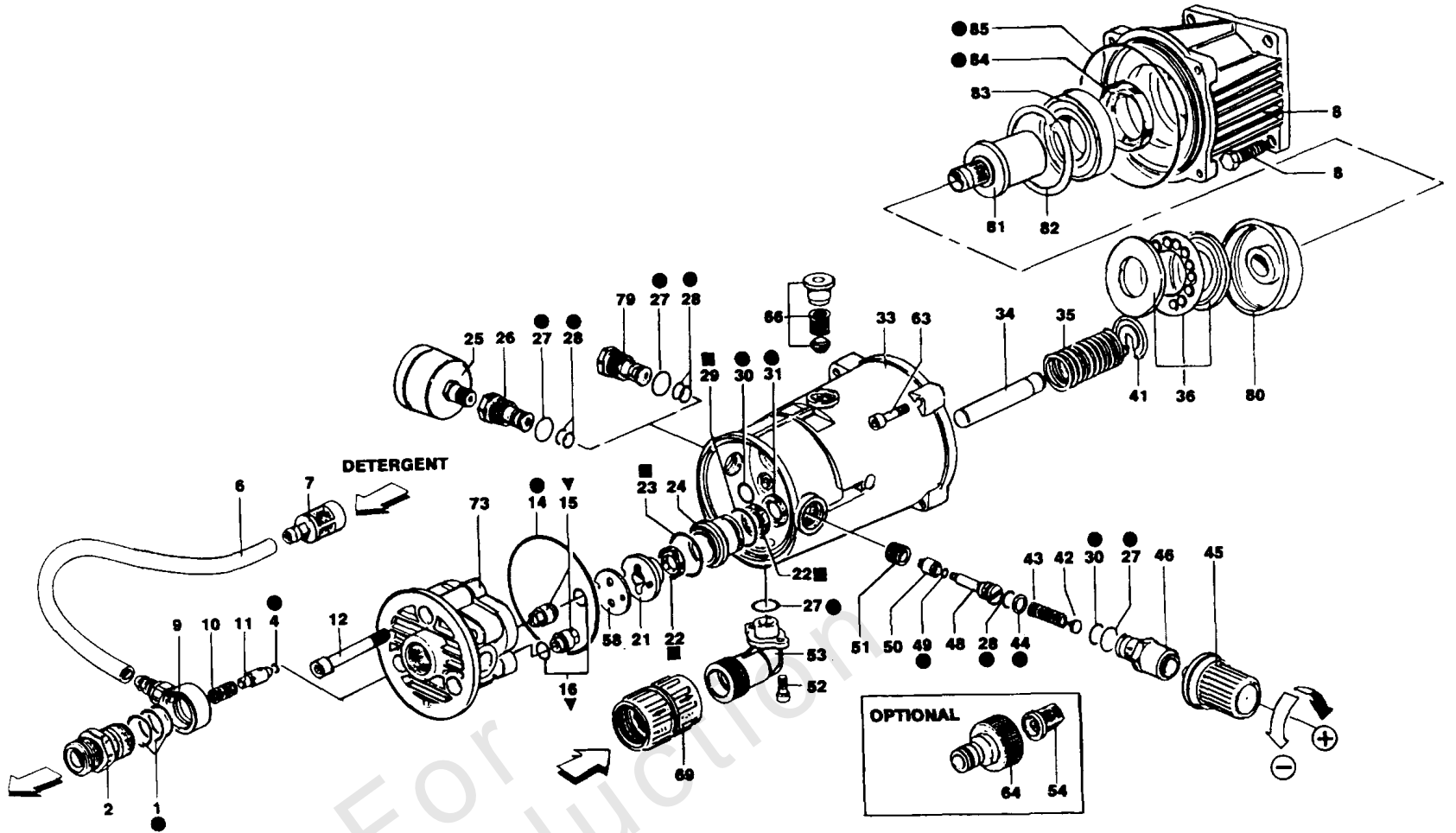
Pump

REF NO	PART NO	QTY	DESCRIPTION
1	87627		Complete Pump Assembly
2	12487627P		O-Ring
3	12587627P		Outlet fitting
4	12687627P		O-Ring
6	89800		Detergent Pick-up Filter
7	89800		Detergent Pick-up Filter
8	-----		UNKNOWN
9	94110		Detergent Pick-up Fitting
10	12787627P		Outlet Valve Spring
11	12887627P		Outlet Valve
12	10087627P		Socket Head Capscrew
14	10187627P		O-Ring
15	10287627P		Inlet/Outlet Valve
16	10387627P		O-Ring
21	10487627P		Plunger Guide Cap
22	10587627P		Seal
23	10687627P		Seal
24	10787627P		Plunger Guide
25	-----		UNKNOWN
26	-----		UNKNOWN
27	10887627P		O-Ring
28	10987627P		O-Ring
29	11087627P		O-Ring
30	11187627P		O-Ring
31	11287627P		Seal
33	-----		Pump Housing
34	-----		Plunger
35	-----		Plunger Spring
36	-----		Wobble Plate Bearing
41	-----		Plunger Spring Keeper
42	11387627P		Spring Contactor
43	11487627P		Spring
44	11587627P		Valve Spacer
45	11687627P		Adjustment Knob
46	11787627P		Valve Body
48	11887627P		Valve Stem
49	11987627P		O-Ring
50	12087627P		Regulator Valve
51	12187627P		Regulator Valve Seat
52	-----		Screw
53	90065		Inlet (suction) Fitting
54	-----		UNKNOWN
58	12287627P		Plunger Plate
63	-----		Socket Head Capscrew
64	-----		UNKNOWN
66	-----		Oil Filter
69	-----		Outlet Hose Coupling
73	12387627		Pump Head
79	-----		Fitting
80	-----		Wobble Plate
81	-----		Drive Shaft

Pump

Note: Unless noted otherwise, use the standard torque specifications

Mfg. No: 1057-0



Pump

REF NO	PART NO	QTY	DESCRIPTION
82	-----		Snap Ring
83	-----		Shaft Bearing
84	-----		Bearing Seal
85	-----		O-Ring
86	-----		Adapter Housing
87	-----		Socket Head Capscrew

Not For Reproduction

Hardware Identification & Torque Specifications

Torque Specification Chart								
FOR STANDARD METRIC MACHINE HARDWARE (Tolerance ± 20%)								
Property Class	5.6		8.8		10.9		12.9	
	Class 5.6		Class 8.8		Class 10.9		Class 12.9	
Size Of Hardware	in/lbs	Nm.	in/lbs	Nm.	in/lbs	Nm.	in/lbs	Nm.
	ft/lbs		ft/lbs		ft/lbs		ft/lbs	
M3	5.88	.56	13.44	1.28	19.2	1.80	22.92	2.15
M4	13.44	1.28	30.72	2.90	43.44	4.10	52.56	4.95
M5	26.4	2.50	60.96	5.75	5.97	8.10	7.15	9.7
M6	44.64	4.3	7.3	9.9	10.3	14	12.1	16.5
M7	5.2	7.1	12.1	16.5	16.9	23	19.9	27
M8	7.7	10.5	17.7	24	25	34	29	40
M10	15	21	35	48	50	67	59	81
M12	26	36	61	83	86.2	117	103	140
M14	42	58	101	132	136	185	162	220
M16	64	88	147	200	210	285	250	340
M18	89	121	202	275	287	390	346	470
M20	126	171	290	390	405	550	486	660
M22	169	230	390	530	559	745	656	890
M24	217	295	497	375	708	960	840	1140
M27	320	435	733	995	1032	1400	1239	1680
M30	435	590	995	1350	1401	1900	1681	2280
M33	590	800	1349	1830	1902	2580	2278	3090
M36	759	1030	1740	2360	2441	3310	2935	3980
M39	988	1340	2249	3050	3163	4290	3798	5150

Torque Specification Chart						
FOR STANDARD MACHINE HARDWARE (Tolerance ± 20%)						
Hardware Grade	No Marks		SAE Grade 5		SAE Grade 8	
	SAE Grade 2		SAE Grade 5		SAE Grade 8	
Size Of Hardware	in/lbs	Nm.	in/lbs	Nm.	in/lbs	Nm.
	ft/lbs		ft/lbs		ft/lbs	
8-32	19	2.1	30	3.4	41	4.6
8-36	20	2.3	31	3.5	43	4.9
10-24	27	3.1	43	4.9	60	6.8
10-32	31	3.5	49	5.5	68	7.7
1/4-20	66	7.6	8	10.9	12	16.3
1/4-28	76	8.6	10	13.6	14	19.0
5/16-18	11	15.0	17	23.1	25	34.0
5/16-24	12	16.3	19	25.8	29	34.0
3/8-16	20	27.2	30	40.8	45	61.2
3/8-24	23	31.3	35	47.6	50	68.0
7/16-14	30	40.8	50	68.0	70	95.2
7/16-20	35	47.6	55	74.8	80	108.8
1/2-13	50	68.0	75	102.0	110	149.6
1/2-20	55	74.8	90	122.4	120	163.2
9/16-12	65	88.4	110	149.6	150	204.0
9/16-18	75	102.0	120	163.2	170	231.2
5/8-11	90	122.4	150	204.0	220	299.2
5/8-18	100	136	180	244.8	240	326.4
3/4-10	160	217.6	260	353.6	386	525.0
3/4-16	180	244.8	300	408.0	420	571.2
7/8-9	140	190.4	400	544.0	600	816.0
7/8-14	155	210.8	440	598.4	660	897.6
1-8	220	299.2	580	788.8	900	1,244.0
1-12	240	326.4	640	870.4	1,000	1,360.0

The guides and ruler furnished below are designed to help you select the appropriate hardware.



Nut, M8

Thread Diameter (mm)

Inside Diameter (in) Threads per inch

Nut, 1/2-16



Screw, M8- 1.25 x 25

Thread Diameter (mm) Distance between threads (mm) Body Length (mm)

Body Diameter Threads per inch Body Length (in)

Screw, 1/2- 16 x 2



Standard Hardware Sizing

When a washer or nut is identified as 1/2" (M8), this is the *Nominal size*, meaning the *inside diameter* is 1/2 inch (8mm metric thread diameter); if a second number is present it represents the *threads per inch* (distance between threads).

When bolt or capscrew is identified as 1/2 - 16 x 2" (M8 - 1.25 x 50), this means the *Nominal size*, or body diameter is 1/2 inch (8mm metric thread diameter), the second number, 16, represents the *threads per inch*, (*distance between threads*). The final number is the body length of the bolt or screw, 2 inches (50mm).

NOTES

- These torque values are to be used for all hardware excluding: locknuts, self-tapping screws, thread forming screws, sheet metal screws and socket head setscrews.
- Recommended seating torque values for locknuts:
 - for prevailing torque locknuts - use 65% of grade 5 torques.
 - for flange whizlock nuts and screws - use 135% of grade 5 torques.
- Unless otherwise noted on assembly drawings, all torque values must meet this specification.

Common Hardware Types

Hex Head Capscrew



Washer



Carriage Bolt



Hex Nut

Wrench & Fastener Size Guide

1/4" Bolt or Nut Wrench—7/16"	5/16" Bolt or Nut Wrench—1/2"	3/8" Bolt or Nut Wrench—9/16"	7/16" Bolt or Nut Wrench (Bolt)—5/8" Wrench (Nut)—11/16"	1/2" Bolt or Nut Wrench—3/4"
M6 Bolt or Nut Wrench—10mm	M8 Bolt or Nut Wrench—13mm	M10 Bolt or Nut Wrench—17mm	M12 Bolt or Nut Wrench—19mm	M14 Bolt or Nut Wrench—22mm

